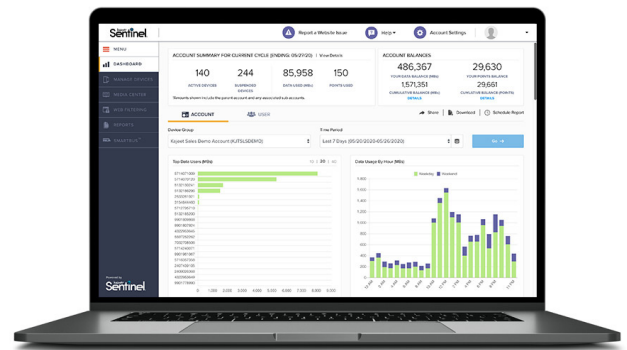






Manage and control your wireless data... on one platform.



As IoT connectivity becomes central to business and industrial applications, managing data consumption and maintaining reliable wireless service will become even more critical to staying competitive. Kajeet's IoT management platform, Sentinel, offers enterprise customers the ability to **easily monitor and manage data usage across millions of devices around the globe.**

-  Private Cellular Network for All Devices
-  Security and Control Over Usage
-  Plug-and-Play or Customizable IoT Solutions
-  Open APIs for Easy Integrations into Your Platforms

SENTINEL IOT PLATFORM

- ✓ Mobile Device Management
- ✓ Security Management and Threat Protection
- ✓ Application Integrations
- ✓ Secure Private Network

Secure Connectivity on a Private Network: Within minutes, users can securely connect and remotely access IoT devices on a private network.

Single Console for Device Management: Kajeet offers one single dashboard for viewing, controlling and managing your data and devices no matter where they are or what network they are on.

CELLULAR DATA-ONLY PLANS

- ✓ Flexible Data-Only Plans
- ✓ Pooled and Shared Data
- ✓ Instant Private Cellular Network
- ✓ Rollover Data

Shared Data Across All Devices: Our optimized, pay-as-you-go data plans are purchased in bulk for sharing across all devices as they need it, no matter where they are or what network they are on.

Rollover Data: With our plans, not only is data in one shared bucket for use across all devices, it doesn't expire at the end of each month but stays on your account through the contract length.

Visit [Kajeet.com](https://www.kajeet.com) or call **866.4Kajeet** to schedule a free demo.



See the difference of the Sentinel® platform and data plans.

	Sentinel Wireless™		Traditional Wireless
Data Plans	<ul style="list-style-type: none"> • Multiple networks • Shareable across devices • No overage charges • Roll over unused data 	VS.	<ul style="list-style-type: none"> • One network • Fixed per device • Subject to overage charges • Lose unused data
Data Management	<ul style="list-style-type: none"> • Easy-to-use cloud-based platform • Advanced filtering and white list • Data usage allocation • Time-of-day controls 	VS.	<ul style="list-style-type: none"> • Manage devices and data plans individually • No filtering or policy management features • No control over devices
Device Management	<ul style="list-style-type: none"> • Device health check • Real-time suspend • Real-time activation 	VS.	<ul style="list-style-type: none"> • Limited device status updates • Cancel contract to suspend • Start new contract to activate
Reporting and Analytics	<ul style="list-style-type: none"> • Real-time reporting of device availability, individual data usage, and filtered content 	VS.	<ul style="list-style-type: none"> • Limited insight into data usage by device
Customer Support	<ul style="list-style-type: none"> • Dedicated account representative • Provide end-to-end support • Software setup and management • Logistics and provisioning • Launch in days 	VS.	<ul style="list-style-type: none"> • Difficult to reach • Only sell data plan • Configure on your own • Cumbersome to sync accounts • Launch in months
Infrastructure	<ul style="list-style-type: none"> • Device agnostic • API Integration 	VS.	<ul style="list-style-type: none"> • Device-use restricted by carrier • Limited to no API integrations
Security	<ul style="list-style-type: none"> • Advanced, customizable malware defense tools 	VS.	<ul style="list-style-type: none"> • Basic or patchwork of carrier-based security options

Visit [Kajeet.com](https://www.kajeet.com) or call **866.4Kajeet** to schedule a free demo.

